

HYDROLEVEL COMPANY

PARTS LIST

EFFECTIVE JULY 1, 2025

Toll Free Order Desk
(800) 654-0768

Phone: (203) 776-0473

Email: customercare@hydrolevel.com

FUEL SMART
HYDROSTAT®

**Universal Temperature
Limit, Boiler Reset and
Low Water Cut-Off**

HYDROSTAT®

**Universal Temperature
Limit and
Low Water Cut-Off**

Safgard™

**Low Water Cut-Offs,
Flow Switches and
Liquid Level Controls**

CycleGard™

**Low Water Cut-Offs
for Steam Boilers**

WAT™

**Water Feeders
for Steam Boilers**

AcuTemp™

Temperature Control

HYDROZONE®

Single Zone Relay

OFC™

Oil Furnace Control

**HYDROLEVEL
COMPANY**

126 BAILEY ROAD, NORTH HAVEN, CONNECTICUT 06473 www.hydrolevel.com

LIMITED MANUFACTURER'S WARRANTY

We warrant products manufactured by Hydrolevel Company to be free from defects in material and workmanship for a period of two years from the date of manufacture or one year from the date of installation, whichever occurs first. In the event of any claim under this warranty or otherwise with respect to our products which is made within such period, we will, at our option, repair or replace such products or refund the purchase price paid to us by you for such products. In no event shall Hydrolevel Company be liable for any other loss or damage, whether direct, indirect, incidental or consequential. This warranty is your EXCLUSIVE remedy and shall be IN PLACE OF any other warranty or guarantee, express or implied, including, without limitation, any warranty of MERCHANTABILITY or fitness for a particular purpose. This warranty may not be assigned or transferred and any unauthorized transfer or assignment thereof shall be void and of no force or effect.

APPLICATION CHART

IMPORTANT: The application information on this schedule provides a general guideline for selecting Hydrolevel controls. We recommend that you refer to your local and state codes prior to purchasing or installing any limit control.

- 1** Residential / Commercial Hot Water Boiler (160PSI)
- 2** Residential / Commercial Steam Boiler (15PSI)
- 3** Commercial / Industrial Hot Water Boiler (250PSI)
- 4** Commercial / Industrial Steam Boiler – Primary Control (250PSI)
- 5** Commercial / Industrial Steam Boiler – Secondary Control (250PSI)

MODEL NUMBER	VOLTAGE	DESCRIPTION	APPLI-CATION <small>See Application Chart Above</small>	PART NO.
--------------	---------	-------------	--	----------

HYDROSTAT – TEMPERATURE LIMIT & LOW WATER CUT-OFF

3150 For Oil Boilers	120VAC	Cold Start or Tankless Coil Operation. • Adjustable Low Temp: OFF or 110°F to 200°F. • Adjustable High Temp: 100°F to 220°F. • Adjustable Differentials: 10°F to 30°F. Suitable for mounting on existing immersion well. NOTE: Hydrolevel Electro-Well™ required for low water cut-off operation (see HydroStat Accessories on page 4).	1	48-3150
--------------------------------	--------	---	----------	---------



FUEL SMART HYDROSTAT – TEMPERATURE LIMIT, BOILER RESET & LOW WATER CUT-OFF

3200-Plus For Gas Boilers	120VAC (24VAC output)	Cold Start or Tankless Coil Operation. • Adjustable Low Temp: OFF or 110°F to 200°F. • Adjustable High Temp: 100°F to 220°F. • Automatic Differentials. • Adjustable Economy Settings: Off, Low, 1, 2, 3, 4, or 5 Zone, High. • Outdoor Reset Ready (see Accessories on page 4). Suitable for mounting on existing immersion well. NOTE: Hydrolevel Electro-Well™ required for low water cut-off operation (see HydroStat Accessories on page 4).	1	48-3200
3250-Plus For Oil Boilers	120VAC			48-3250
3000 For Gas Boilers	24VAC	Cold Start Operation. • Adjustable High Temp: 100°F to 220° • Automatic Differentials. • Adjustable Economy Settings: Off, Low, 1, 2, 3, 4, or 5 Zone, High. Includes wire harnesses for transformer-type control centers and common integrated ignition controls.		48-3000



OEM SPECIFIC REPLACEMENTS FOR FUEL SMART HYDROSTATS

3000-190 ■ UTICA ■ DUNKIRK	24VAC	• for replacement on Utica UB90 and Dunkirk Q90 boilers and does not include a temperature sensor. • Adjustable High Temp: 100°F to 190°F	1	48-3002
3203SF ■ SLANT FIN	24VAC	• for Slant Fin Sentinel Models SE-140, 175, 210, 245 • for Slant Fin Sentry Models S-90, 120, 160 Includes HydroStat control 48-3200-03, Electro-Well, 12" Sensor, Well Grommet Cover, Plastic Molded Bezel, Installation Instructions		48-3203SF
3204SF ■ SLANT FIN	24VAC	• for Slant Fin Sentinel Model SE-70 • for Slant Fin Sentry Model S-60 Includes HydroStat control 48-3200-04, Electro-Well, 12" Sensor, Well Grommet Cover, Plastic Molded Bezel, Installation Instructions, Transformer		48-3204SF

Model 3200-Plus includes 24 volt 30VA transformer for burner circuit and vent damper.

HydroStat Universal Replacement – Cross Reference Table

Upgrading existing installations with HydroStat or Fuel Smart HydroStat

3200-Plus – Replaces L8124E, L8148E

3150 & 3250-Plus – Replaces L7124A, L7124C, L7148A, L7224A, L7224C, L7224U, L7248A, L7248C, L8124A, L8124C, L8148A, L8148C

3000 – Replaces L4006A, L4080B

SEE HYDROSTAT ACCESSORIES – PAGE 4

MODEL NUMBER	VOLTAGE	DESCRIPTION	APPLI-CATION See Application Chart Above	PART NO.
--------------	---------	-------------	---	----------

FUEL SMART HYDROSTAT-IC – IGNITION, TEMPERATURE LIMIT, BOILER RESET, LOW WATER CUT-OFF (for Gas Boilers)

4200A	24VAC	HydroStat-IC Control – Atmospheric, Fascia Mount with 24" Sensor for Replacement on Utica Model MGB-K & UH15B-K, Dunkirk Model DXL-K, Pennco Model 15B-K	1	48-4201
4200AXL	24VAC	HydroStat-IC Control – Atmospheric, Fascia Mount with 24" Sensor for Replacement on Laars Mini-Therm® JX		48-4201X
4200AX	24VAC	HydroStat-IC Control – Atmospheric, Fascia Mount with 48" Sensor for Replacement on PB Heat Model MI-e™		48-4202X



HYDROSTAT ACCESSORIES – Orders for accessories do not apply to order quantity for determining price column

MODEL NUMBER	PART NUMBER	DESCRIPTION
--------------	-------------	-------------

ELECTRO-WELL™ (for use with HydroStats to activate LWCO function)

EW-201	48-201	Standard Electro-Well, 3/4" NPT, standard nut
EW-202	48-202	Extended Electro-Well, 3/4" NPT, long nut for tankless coil boilers
EW-203	48-203	3/4" NPT, short insertion depth, standard nut
EW-204	48-204	3/4" NPT, long nut, short insertion length for off-center immersion well tapping in tankless coil plate
EW-205	48-205	3/4" NPT, extra short insertion length for tight inside casting clearance
EW-206	48-206	3/4" NPT, standard insertion depth, long nut (Buderus)
EW-221	48-221	Standard Electro-Well, 1/2" NPT, standard nut
EW-222	48-222	Extended Electro-Well, 1/2" NPT, long nut for tankless coil boilers
EW-223	48-223	1/2" NPT, short insertion depth, standard nut
EW-224	48-224	1/2" NPT, long nut, short insertion length for off-center immersion well tapping in tankless coil plate
EW-225	48-225	1/2" NPT, extra short insertion length for tight inside casting clearance
EW-226	48-226	1/2" NPT, standard insertion length, long nut
48-130-10	48-130-10	Brush for cleaning interior of immersion well



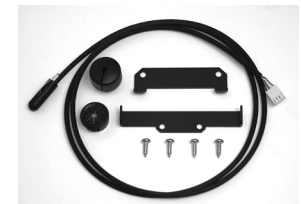
OUTDOOR SENSOR KITS

OS-100	48-140	Activates Outdoor Reset and Warm Weather Shut-Down on HydroStat models 3200-Plus and 3250-Plus
OS-200	48-145	Wireless Outdoor Sensor Kit – Activates Outdoor Reset and Warm Weather Shut-Down on HydroStat models 3200-Plus and 3250-Plus



REMOTE MOUNTING KITS for HydroStats (Kit includes mounting bracket, rubber cups, 4 inch sensor, grommet)

48-101	48-101	Wall/Jacket Mounting Kit with 24" sensor cord
48-105	48-105	Wall/Jacket Mounting Kit with 36" sensor cord
48-102	48-102	Wall/Jacket Mounting Kit with 48" sensor cord
48-103	48-103	Wall/Jacket Mounting Kit with 10' sensor cord
48-104	48-104	Wall/Jacket Mounting Kit with 20' sensor cord
48-121	48-121	Pipe Mounting Kit with 48" sensor cord



REPLACEMENT SENSORS

48-3250-60	48-3250-60	12" replacement sensor for HydroStat
48-3250-59	48-3250-59	24" replacement sensor for HydroStat
48-3250-67	48-3250-67	36" replacement sensor for HydroStat
48-3250-58	48-3250-58	48" replacement sensor for HydroStat
48-3250-57	48-3250-57	60" replacement sensor for HydroStat
48-3250-56	48-3250-56	10 ft. replacement sensor for HydroStat
48-3250-55	48-3250-55	20 ft. replacement sensor for HydroStat



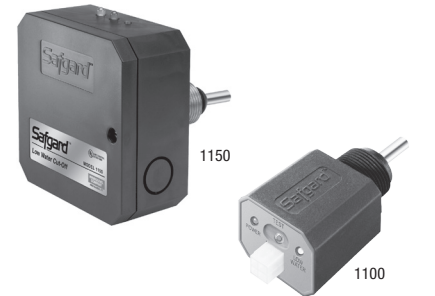
MODEL NUMBER	VOLTAGE	DESCRIPTION	APPLI-CATION See Application Chart Above	PART NO.
--------------	---------	-------------	---	----------

LOW WATER CUT-OFFS

Automatic Reset with Burner Circuit Test Button — Residential Code Controls

Wire Harnesses also sold separately (see page 8).

1100	24VAC	Compact low water cut-offs for residential boilers. Interrupts power immediately in low water condition. Power and Low Water lights with Test button. 1100 comes with wiring harness for standard fan center.	1	45-1100
1100H3		1100 without wiring harness		45-1103
1100H5		1100 with harness for Weil-McLain Ultra, Lochinvar Knight and Solution		45-1105
1100H7		1100 with harness for connecting vent damper plug on Honeywell and UTC boiler control modules (natural draft models only)		45-1107
1100H8		1100 with harness for connection to UTC control for Weil-McLain models CGa & CGi and Williamson GWA & GWI		45-1108
1150	120VAC	See description for 1100 (above)		45-1150



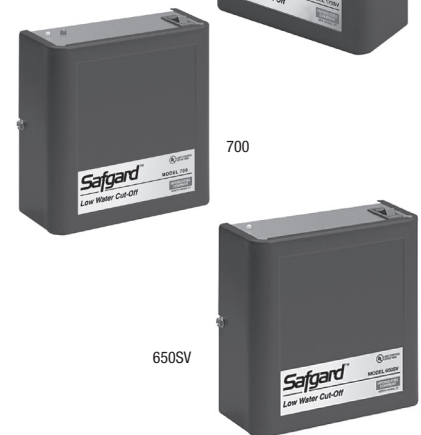
Automatic Reset

24	24VAC	Interrupts power immediately in low water condition. Automatically resets on normal water level. SV models include shorter EL1214-SV probe suitable for mounting in standard black tee.	1	45-240
24SV				45-245
170	120VAC			45-170
170SV				45-175



Manual Reset

700	24VAC	Interrupts power immediately in low water condition. Manual reset required after 30 seconds. Will not trip out on power failure. SV models include shorter EL1214-SV probe suitable for mounting in standard black tee.	3,5	45-700
700SV				45-701
750	120VAC			45-750
750SV				45-751



Automatic Reset & Test Button/Light

600	24VAC	Interrupts power immediately in low water condition. Automatically resets on normal water level. Test Button tests control operation. SV models include shorter EL1214-SV probe suitable for mounting in standard black tee. P models include EL1214-P probe with longer nut for boilers with thicker jackets.	1,3	45-600
600SV				45-601
650	120VAC			45-650
650SV				45-651
650P				45-653

Manual Reset & Test Button/Light

1100M	24VAC	Compact low water cut-off for wall hung and space constrained applications. Interrupts power immediately in low water condition. Manual reset required after 30 seconds. Will not trip out on power failure. Test button tests control operation. Includes standard wire harness.	1	45-1100M
1100M5		1100M with harness for Weil-McLain Ultra, Lochinvar Knight and Solution		45-1105M
1100M7		1100M with harness for connecting to vent damper plug on Honeywell and UTC boiler control modules (natural draft models only)		45-1107M
1100M8		1100M with harness for connection to UTC control for Weil-McLain models CGa & CGi and Williamson GWA & GWI		45-1108M
500	24VAC	Interrupts power immediately in low water condition. Manual reset required after 30 seconds. Will not trip out on power failure. Test button tests control operation. SV Models include shorter EL1214-SV probe suitable for mounting in standard black tee. R models include EL1214-R probe for remote mounting. P models include EL1214-P probe with longer nut for boilers with thicker jackets. LSV models include EL1214-LSV probe.	3,5	45-500
500SV				45-501
550				45-550
550SV				45-551
550R				45-552
550P				45-553
550LSV				45-5510



MODEL NUMBER	VOLTAGE	DESCRIPTION	APPLI-CATION See Application Chart Above	PART NO.
--------------	---------	-------------	---	----------

LOW WATER CUT-OFFS – continued

Non-Cycling Steam Primary Low Water Cut-Off – 15 Second Delay

400	24VAC	Interrupts power after 15 second delay in a low water condition. Automatically resets on return of normal water level. R models include EL1214-R probe for remote mounting.	2	45-400
400R				45-402
450	120VAC			45-450
450R				45-452



400

CycleGard – 15 Second Delay & Intermittent Level Test with *Smart Cycle*

CG400-2090	24VAC	Same as 400 Series described above with foam compensating Intermittent Level Test.	2	45-410-2090
CG450-1560	120VAC			45-460-1560
CGT450-1560 for tankless coil				45-480-1560

INTERMITTENT LEVEL TEST		
Models ending in	Frequency of Test	Duration of Test
1560	every 15 minutes	60 seconds
2090	every 20 minutes	90 seconds

INTERMITTENT LEVEL TEST

Models ending in	Frequency of Test	Duration of Test
1560	every 15 minutes	60 seconds
2090	every 20 minutes	90 seconds

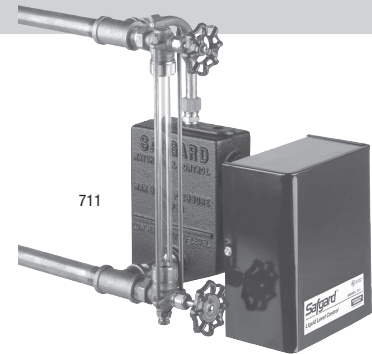
Note: Additional probe options available on above models. Contact factory for part numbers and pricing. CG400-1090 has been replaced by CG400-2090; CG450-1090 has been replaced by CG450-1560

CG400-2090



LOW WATER CUT-OFF / FEEDER COMBINATIONS – For attachment to Gauge Glass Tappings

724WF	24VAC	Includes manifold casting, two probes, quick hook-up fittings, blow down valve and feed valve assembly. Interrupts power + activates water feed in a low water condition.	2 (15 PSI max)	45-724
711WF	120VAC			45-711
724CF	24VAC	As described above – without feed valve assembly.		45-720
711CF	120VAC			45-710



711

WATER FEEDERS

VXT-24	24VAC	Fully programmable delay before feed and feed settings (1 to 5 gallon). Digital feed counter.	2	45-026
VXT-120	120VAC			45-122
VXTC	120VAC	Programmable feeder (45-127) for commercial boilers. Includes water meter (45-130) with 3/4" fittings, Y-strainer and flow restrictor.	4	45-125
VXTC-WF	120VAC			45-127



VXT-120

NOTE: For feed valve service kit (Model 45-435) as well as Pro Press Adapter Kit (Model 45-335), see bottom of page 8.

MODEL NUMBER	VOLTAGE	DESCRIPTION	APPLI-CATION See Application Chart Above	PART NO.
--------------	---------	-------------	---	----------

PUMP CONTROLLER / LOW WATER CUT-OFF COMBINATIONS

250	120VAC	Controls boiler feed pump to maintain boiler water level. Provides low water cut-off protection. Includes manifold casting with three model EL1214 probes. WC model includes water column manifold model 1214C-1.	4	45-250
250WC				45-252



250

FLOW SWITCHES

FS200	N/A	Replaces Model 44-100. General purpose liquid flow switch, 160 PSI, fits 1" to 6" pipe. General purpose enclosure.	Multi-Purpose	44-200
FS204	N/A	General purpose liquid flow switch, 160 PSI, fits 1" to 6" pipe. NEMA 4 enclosure.	Multi-Purpose	44-204



FS200

FS204

WATER METER

WM-1	N/A	General purpose, heavy-duty water meter with 3/4" adaptors rated from .5gpm to 35gpm.	Multi-Purpose	45-130
------	-----	---	---------------	--------



WM-1

HI WATER LIMIT & TANK LEVEL / PUMP CONTROLLERS

270SV	120VAC	High water limit control. Interrupts power to pump/feeder in high water condition. Provides alarm contacts. Includes EL1214-SV probe suitable for mounting in standard black tee.	Multi-Purpose	45-270
727	120VAC	Maintains high level. Contacts make to start pump on low level. Includes one EL1214-SV, and one EL1214-RSV probe.	Multi-Purpose	45-727
787	120VAC	Maintains low level. Contacts make to start pump on high level. Includes one EL1214-SV, and one EL1214-RSV probe.	Multi-Purpose	45-787



270SV

ACU-TEMP TEMPERATURE CONTROL

2000	24VAC	Controls water temperature in indirect water heaters. Closely monitors the rate of temperature changes and controls the heating source to minimize fluctuations in tank temperature, while optimizing fuel efficiency. Includes two 90° sensors (1 with 3/8" head; 1 with 1/4" head).	Multi-Purpose	46-2000
------	-------	---	---------------	---------



2000

HYDROZONE SINGLE ZONE RELAY

6001	120VAC	Switching relay used to control circulator pumps via standard 24V room thermostats (for one zone). Includes several quality of life features including visible LED indicators, common terminal for Smart Thermostats, zone wiring test button and more.	1,2	46-6001
------	--------	---	-----	---------



6001



OFC – Universal Oil Furnace Control (PSC motors only)

OFC-5023	120VAC	Furnace motor control for 2 or 3 speed PSC motors. Compatible replacement for existing two or three speed controls on a furnace with a PSC motor. Includes LED indicators, industry standard wiring terminals, simple to use dip switch settings and more.	PSC Furnaces	47-50231
----------	--------	--	--------------	----------

PARTS AND ACCESSORIES – Orders for parts do not apply to order quantity for determining price column

MODEL NUMBER	PART NUMBER	DESCRIPTION
--------------	-------------	-------------

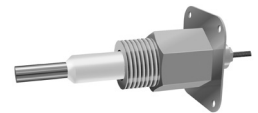
MANIFOLD FITTINGS

FOEM-2	45-304	1" x 1" x 3/4" C.I. Tee 160 PSI Max.
FOEM-3	45-305	1-1/4" x 1-1/4" x 3/4" C.I. Tee 160 PSI Max.
1" H.P. Tee	45-322	1" x 1" x 3/4" High Pressure Tee (250 PSI Max.) for use with Model EL1214-SV probe
1214C-1	45-301	1" x 1" x (3) 3/4" tappings for probe, sightglass & tri-cocks
1214C-2	45-302	1" x 1" x 3/4" C.I. Tee 250 PSI Max.
250C	45-303	1" x 1" x (3) 3/4" probe tappings. 250 PSI Max.
711C	45-309	(2) 3/4" probe tappings C.I. 35 PSI Max.
711C with fittings	45-310	711C casting as described above w/ quick hook-up fittings for gauge glass attachment.
711/24	45-311	Fittings for Model 711/24 Low Water Cut-off/Feeder Combo



PROBES

EL1150	45-210	3/4" NPT, 1-15/16" inside dimension. For 1150 Series controls.
EL1214	45-214	3/4" NPT, 2-7/8" inside dimension. Standard ceramic.
EL1214-SV	45-215	3/4" NPT, 2-1/16" inside dimension. Short ceramic.
EL1214-P	45-226	3/4" NPT, 2-7/8" inside dimension. Standard ceramic. Long nut (1-1/16").
EL1214-LSV	45-227	3/4" NPT, 2-1/16" inside dimension. Short ceramic.
EL1214-R	45-224	EL1214 probe in J-box with metal cover.
EL1220	45-220	1/2" NPT, 2-7/8" inside dimension. Standard ceramic.
EL1220-R	45-223	EL1220 probe in J-box with metal cover.
EL1220-SV	45-221	1/2" NPT, 2-1/16" inside dimension. Short ceramic.



COMMERCIAL/INDUSTRIAL CONTROLS • Control box only • For field replacement • Probes and manifolds not included

711-CO	45-713	Low water cut-off. 120 VAC, 60 Hz. Supply Voltage.
724-CO	45-726	Low water cut-off. 24 VAC, 60 Hz. Supply Voltage.
250-CO	45-260	Low water cut-off. 120 VAC, 60 Hz. Supply Voltage.

PARTS

45-531-51	45-531-51	Standard wire harness for Model 1100 LWCO (60 inch). Replacement for 45-531-54.
45-347	45-347	Wire harness for connecting Model 1100 to Burnham PVGA, PVCGA, Series 2, New Yorker CG-D
45-348	45-348	Wire harness for connecting Model 1100 to UTC Boiler Control Module
45-349	45-349	Wire harness for connecting Model 1100 to Lochinvar Knight and Solution, Weil-McLain Ultra
45-350	45-350	Wire harness for connecting Model 1100 to Burnham CHG, SCG, PVG, Crown Bimini
45-353	45-353	Wire harness for connecting Models 1100 and 1100M to vent damper plug on boiler control modules
45-354	45-354	Wire harness for Weil-McLain CGA, CGI and Williamson GWA, GWI with UTC integrated control module
KUP-11A15	45-337	Plug-in relay, DPDT for 250,967,727,787 controls
KUP-14A15	45-338	Plug-in relay, 3PDT for 711,724 controls
45-024-66	45-343	24 VAC Feed Valve Assembly for VXT-24 Solenoid Valve
45-120-66	45-344	120 VAC Feed Valve Assembly for VXT-120 Solenoid Valve
45-725	45-725	24 VAC Feed Valve Assembly in J-Box
45-715	45-715	120 VAC Feed Valve Assembly in J-Box
44-200-61-X	44-200-61-X	Paddle Set for Flow Switches
45-345	45-345	VXT Feed Valve Service Kit
45-335	45-335	VXT Pro Press Adapter Kit