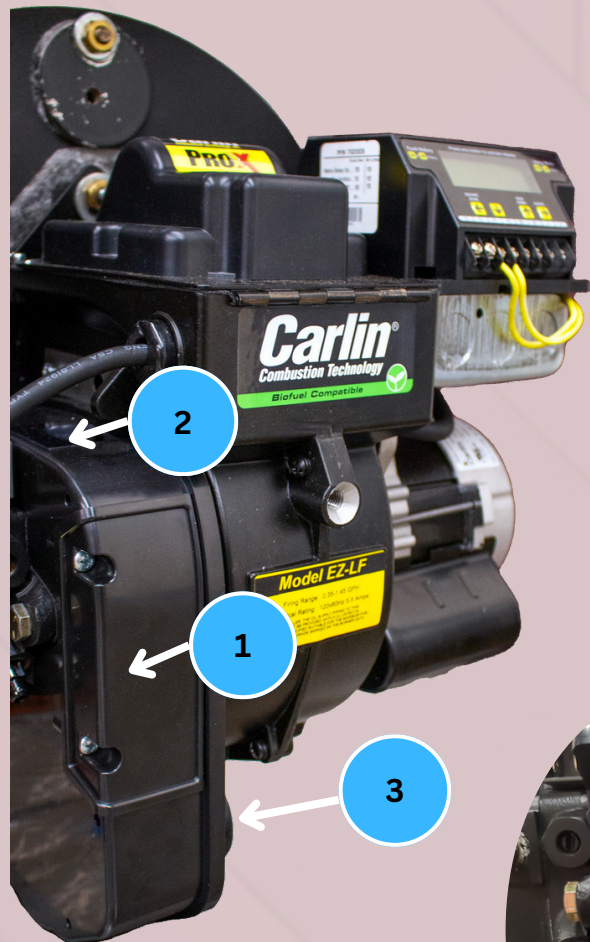


# Carlin Air Boot

## Quick Guide



**CARLIN BURNERS ARE FACTORY SET.** However **you must use a combustion analyzer** to verify that the burner is properly set up per the appliance manufacturer's listed settings.

### TO ADJUST THE AIR SETTING:

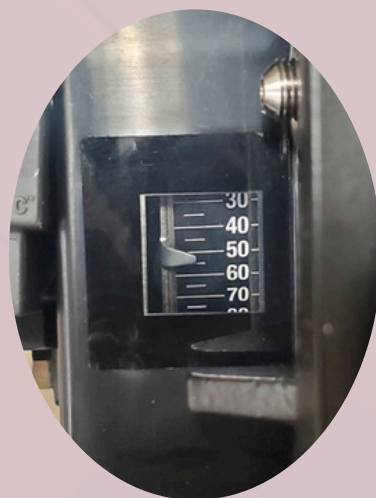
1. Remove the air band access cover. **1**
2. Loosen the lock screw and move the air band to achieve the desired CO2 setting. **2** ***Consult the appliance manufacturer's literature included with this unit for proper settings.***
3. Tighten the air band lock screw.
4. Replace the air band access cover and **use a combustion analyzer to verify that the burner is properly set up per the appliance manufacturer's listed settings.**



SCAN THE QR CODE  
FOR PRODUCT VIDEO,  
LITERATURE AND MORE!



**1** Air Band Access Cover  
(Removed)



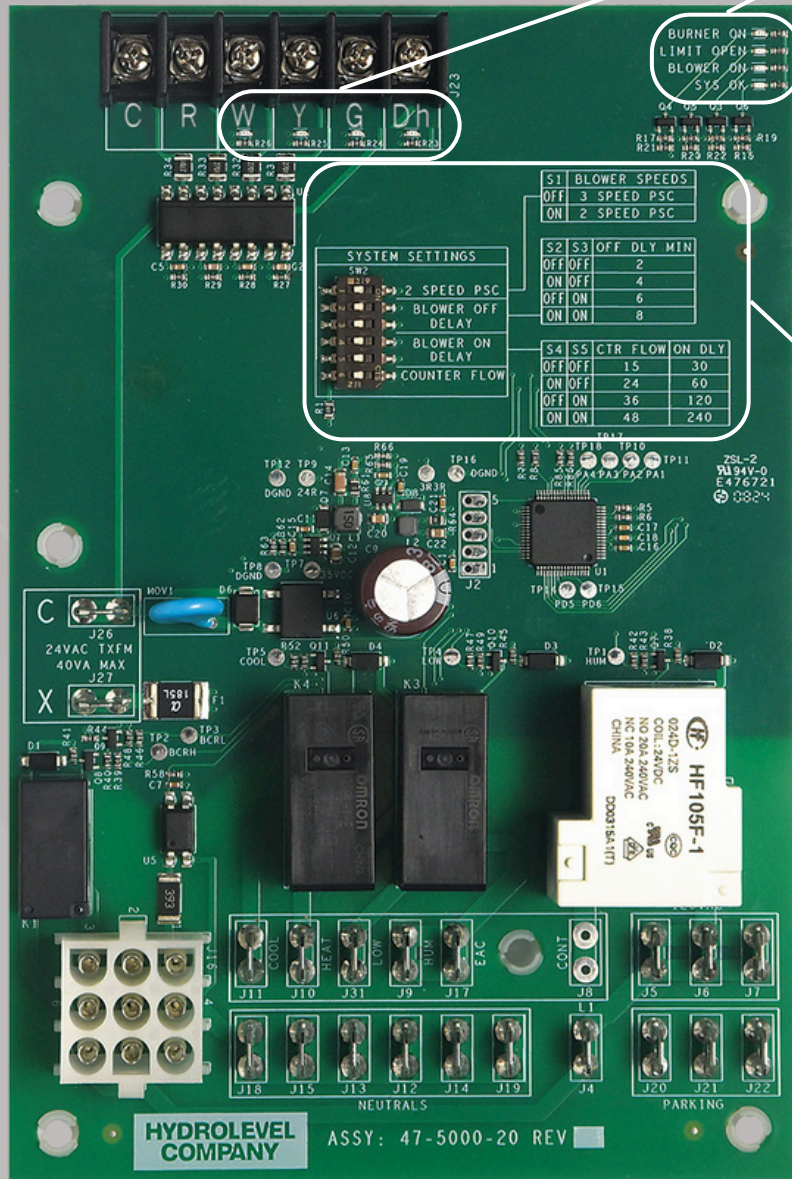
**2** Air Setting Window



**3** Air Inlet

# OFC Fan Timer Control

## Quick Guide



## Operational LEDs

- **W, Y, G, Dh (Thermostat Terminals)**  
When lit, indicates thermostat has sent a signal to the specified terminal
- **BURNER ON (Solid)**  
Controller has sent a signal to the burner to run
- **LIMIT OPEN (Flashing)**  
Normally closed furnace limit circuit is open
- **BLOWER ON (Solid)**  
Controller has energized the blower motor
- **SYS OK**
  - **Flashing** - The control has passed all internal self-checks and is operational
  - **Solid** - The control has failed a self-check and will not function
  - **Off** - Indicates a problem in the 24VAC circuit.

### SYSTEM SETTINGS

SW2	
OFF	ON
1	2 SPEED PSC
2	BLOWER OFF DELAY
3	BLOWER ON DELAY
4	COUNTER FLOW
5	
6	

S1	BLOWER SPEEDS
OFF	3 SPEED PSC
ON	2 SPEED PSC

S2	S3	OFF DLY MIN
OFF	OFF	2
ON	OFF	4
OFF	ON	6
ON	ON	8

S4	S5	CTR FLOW	ON DELAY
OFF	OFF	15	30
ON	OFF	24	60
OFF	ON	36	120
ON	ON	48	240

S6	CTR FLOW ON/OFF
OFF	CTR FLOW OFF
ON	CTR FLOW ON



SCAN THE QR CODE

FOR PRODUCT VIDEO,  
LITERATURE AND MORE!

**HYDROLEVEL  
COMPANY**