

HYDROSTAT®

Remote Mounting Kit

KIT INCLUDES

2 mounting brackets, remote sensor, plastic grommet, rubber well cap, 4 #8 x 1/2" self-tapping mounting screws.

48-101 HydroStat Remote Mount Kit with 24" sensor

48-102 HydroStat Remote Mount Kit with 48" sensor

48-103 HydroStat Remote Mount Kit with 10' sensor

48-104 HydroStat Remote Mount Kit with 20' sensor

⚠ WARNING **Electrical shock hazard.** To prevent electrical shock, death or equipment damage, disconnect power supply before installing or servicing control. Only qualified personnel may install or service this control in accordance with local codes and ordinances. Read instructions completely before proceeding.

⚠ CAUTION To prevent serious burns, boiler should be thoroughly cooled before installing or servicing control.

STEP 1 Select desired location for mounting the control. Use the template on the back of this sheet to determine the screw locations. Drill pilot holes using 1/8" bit, if necessary.

STEP 2 Attach bottom mounting bracket using self-tapping screws provided (Figure 1).

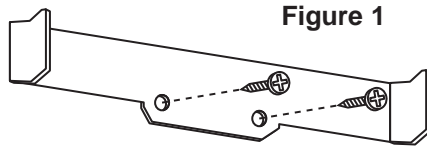


Figure 1

STEP 3 Insert the top mounting bracket (Figure 2) into the slots on the back of the control box (A) and rotate the bracket upward (B).

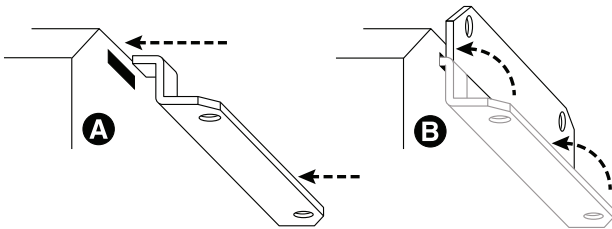


Figure 2

STEP 4 Place the control box onto bottom mounting bracket. Attach the top bracket with remaining self-tapping screws.

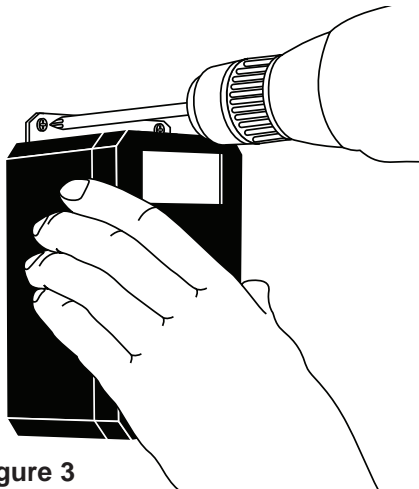


Figure 3

STEP 5 Replace the 12" factory-installed sensor with the 24", 48", 10' or 20' sensor supplied in the remote mounting kit. Release the lock on the plug-in connector before unplugging the 12" sensor. The new connector will lock into place.

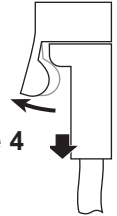


Figure 4

STEP 6 Choose which of the two upper knockouts on the sides of the control box will be used for the sensor. Remove the knockout.

STEP 7 Install the plastic grommet in the knockout hole.

STEP 8 From inside the box, feed the thermistor end of the 24", 48", 10' or 20' sensor wire through the plastic grommet to the well (Figure 5).



Figure 5

STEP 9 Insert sensor all the way into well. Install rubber well cap onto sensor wire and slide to cover end of well (Figure 6).

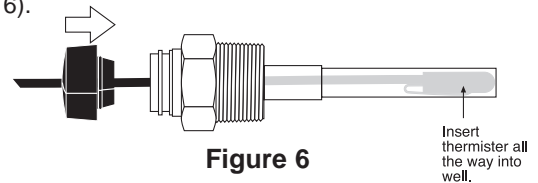


Figure 6

STEP 10 Ensure incoming voltage ground wire is connected to ground screw (Figure 7). **IMPORTANT:** If the control is not properly grounded to the boiler, the HydroStat will not detect water and will remain in a low water condition. If this occurs, attach a second ground wire from the green ground screw to the boiler.

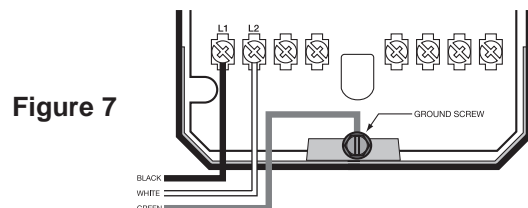
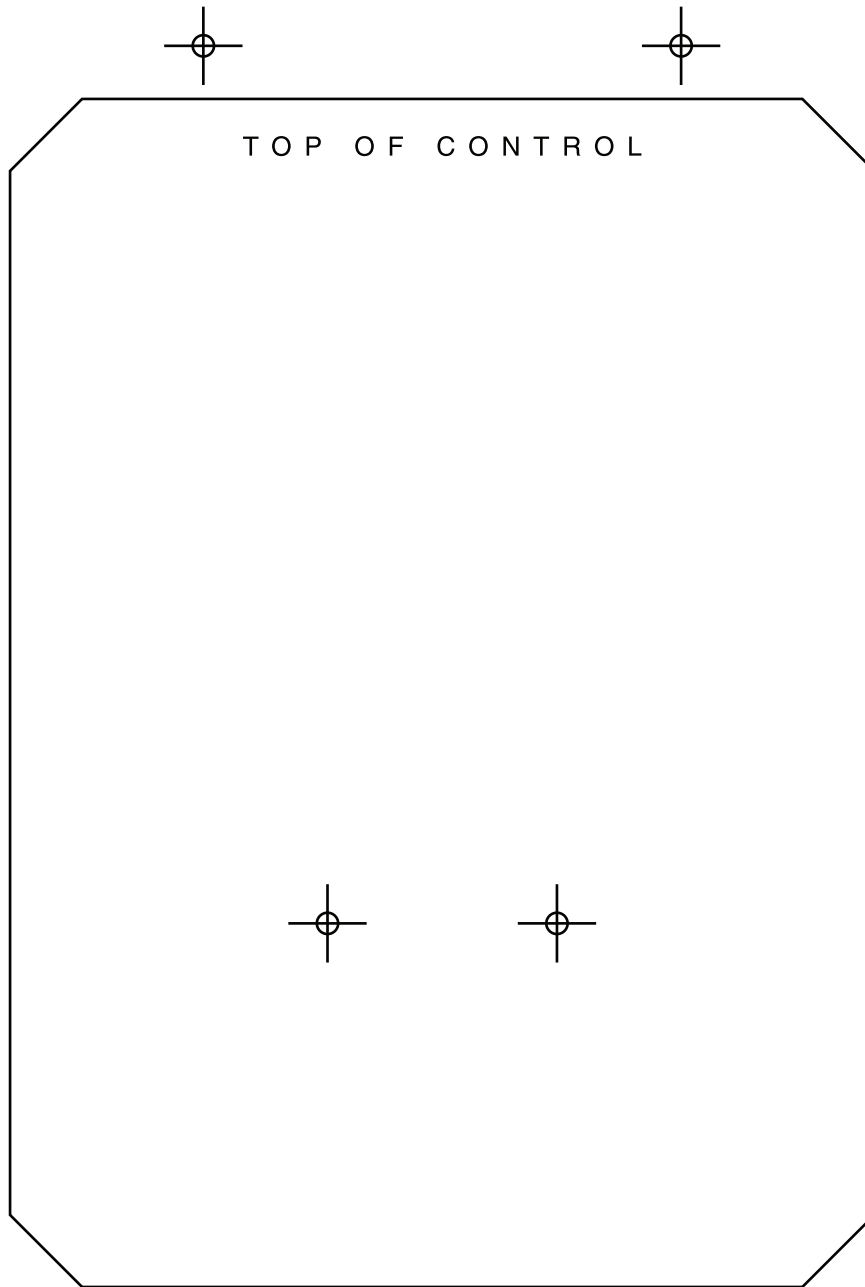


Figure 7

Proceed with **WIRING** and **SETTINGS** as described in the instructions for the HydroStat control.

**HYDROLEVEL
COMPANY**

126 Bailey Road, North Haven, CT 06473 • Phone (203) 776-0473 • FAX (203) 764-1711 • www.hydrolevel.com



LIMITED MANUFACTURER'S WARRANTY

We warrant products manufactured by Hydrolevel Company to be free from defects in material and workmanship for a period of two years from the date of manufacture or one year from the date of installation, whichever occurs first. In the event of any claim under this warranty or otherwise with respect to our products which is made within such period, we will, at our option, repair or replace such products or refund the purchase price paid to us by you for such products. In no event shall

Hydrolevel Company be liable for any other loss or damage, whether direct, indirect, incidental or consequential. This warranty is your EXCLUSIVE remedy and shall be IN PLACE OF any other warranty or guarantee, express or implied, including, without limitation, any warranty of MERCHANTABILITY or fitness for a particular purpose. This warranty may not be assigned or transferred and any unauthorized transfer or assignment thereof shall be void and of no force or effect.